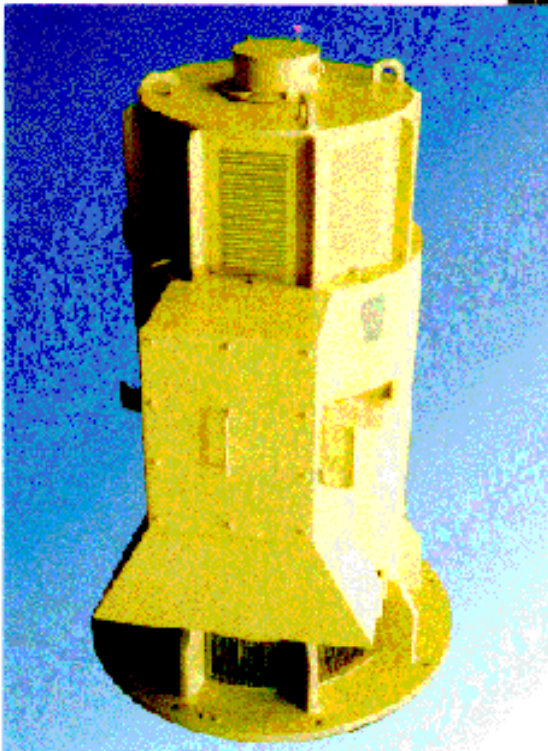
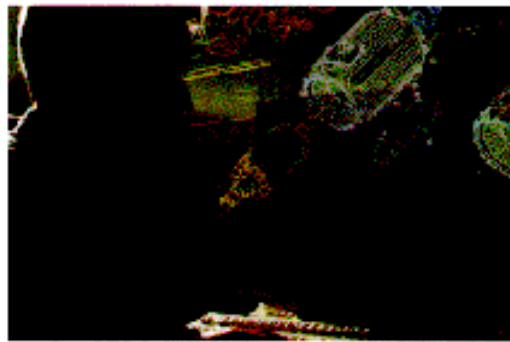


# FKI Rotating Machines

P R I M E P O W E R



MarelliMotori



IN MARELLI  
MOTORI  
QUALITY IS SPELT  
WITH A CAPITAL  
"Q"

IN MARELLI  
MOTORI  
LA QUALITA'  
SI SCRIVE  
CON LA "Q"  
MAIUSCOLA



SISTEMA DI GESTIONE  
AVVANTATE CERTIFICATO



 **MarelliMotori**

Since 1891

## RECOMENDED MONITORING DEVICES



RESISTANCE THERMOMETER

PICK-UP VIBRATIONS

WINDING RESISTANCE THERMOMETER

ANTI CONDENSATION HEATERS

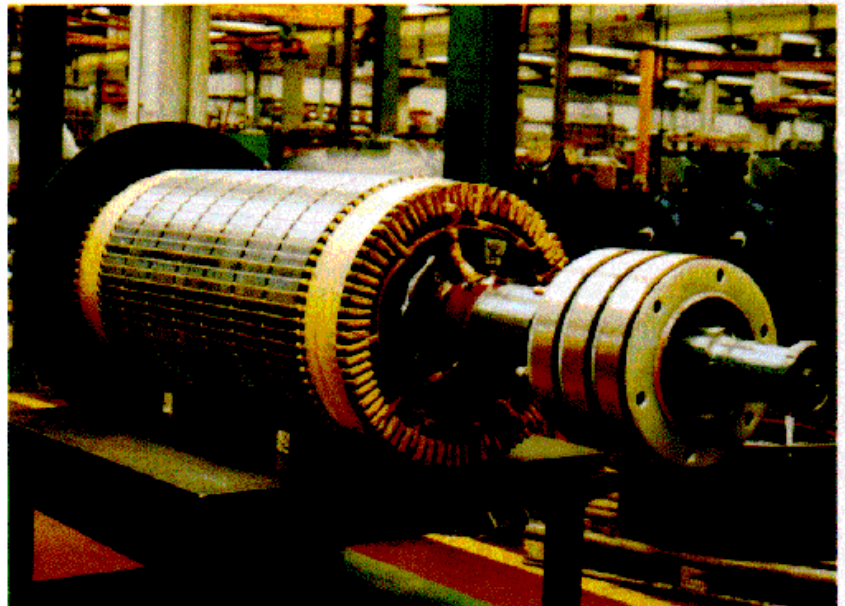
RESISTANCE THERMOMETER

PICK-UP VIBRATIONS

### NEPTŪNUS SERIES OPTIMIZES THE OPERATING AS BOW THRUSTER AND PROPULSION MOTORS

- Higher performance data and complete reliability to meet market requirements
- High efficiency and better power factor to have the maximum generated energy
- Top quality and reliability obtained with the best choice of components
- Winding with additional protective treatment

Marelli Motori also produces Slip - Ring bow thruster and propulsion to 3000 Kw



# SQUIRREL - CAGE THREE - PHASE MARINE MOTORS

**N E P T Ū N U S**  
**S E R I E S**

## MOTORS FOR BOW THRUSTER AND PROPULSION

- Motors are manufactured, and can be tested, according to the major naval regulations as for example **DnV, RINA, ABS, BV, LRS, GL** and **KR**.
- Mounting arrangements according to IEC 34 / 7. Standard types IM 1001 and IM 4011.
- The standard degree of protection is IP 23, according to IEC 34 / 5. IP 44 or IP 55 upon request.

## RUGGED AND SOLID MARINE DESIGN

- Housing of rolled, welded steel ensure stiffness, high shock and vibration resistance.
- Well dimensioned terminal boxes for main connections, with comfortably large space.
- Separate mounted terminal boxes on request for connection of accessories as thermistors, heaters and PT 100 - sensors.
- Corrosive protection by anticorrosion paint for marine duty.
- Double vacuum impregnation of winding added with special paint on windings ensures protections against effects of tropical climates, moisture as against oil vapours.

## RELIABILITY

- "MARELLI MOTORI" motors are certified under **ISO 9001** international quality standard.
- The motors have a generous overload margin with solid lamination, winding and rotor design.
- The use of non - higroscopic materials provides resistance to moisture, corrosive atmospheres and pollution.
- Anti condensation heaters can be fitted to the winding heads. Heaters are of high output to ensure non condensation under any circumstance to safeguard

POLES 4 - FREQUENCY 50 Hz - ENVIRONNEMENT 45 ° C

TYPE	SERVICE	SPEED	EFFICIENCY	COS φ	CURRENT		TORQUE			WEIGHT - B3	SERVICE
					NOMINAL	STARTING	NOMINAL	STARTING	PULL - OUT		
	S1	rpm	%	p.u.	380 V In / A	Ia / In	M Nm	Ma / M	Mm / M	Kg	S ≥ 30 mm KW
C3M 315 MA4	200	1475	93,5	0,87	374	5,8	1294	2,4	2,4	640	240
C3M 315 MB4	250	1475	94	0,88	460	5,8	1617	2,5	2,4	720	300
C3M 315 MD 4	315	1475	94,5	0,88	576	6	2037	2,6	2,5	825	370
C3M 355 LX4	375	1486	95	0,82	732	5,8	2407	1,7	2	1150	430
C3M 355 LW4	450	1486	95,4	0,84	854	5,8	2889	1,8	2	1260	570
C3M 355 LY 4	560	1487	95,9	0,83	1070	6,3	3593	2,1	2,2	1450	640
C3M 355 LZ 4	600	1487	96	0,85	1118	6,3	3849	2	2,1	1530	700
C3M 400 LX 4	710	1488	96,3	0,85	1319	6,5	4552	1,6	2,2	2150	820
C3M 400 LW 4	800	1489	96,4	0,84	1503	6,8	5126	1,8	2,4	2300	920
C3M 400 LY 4	1000	1488	96,2	0,85	1860	7	6411	1,1	2,4	2450	1150
C3M 500 LC 4	1200	1487	96,4	0,87	2176	6,7	7699	1	2,3	3300	1400
C3M 500 LF 4	1500	1488	96,8	0,88	2679	7	9617	1	2,5	4400	1800

POLES 4 - FREQUENCY 60 Hz - ENVIRONNEMENT 45 ° C

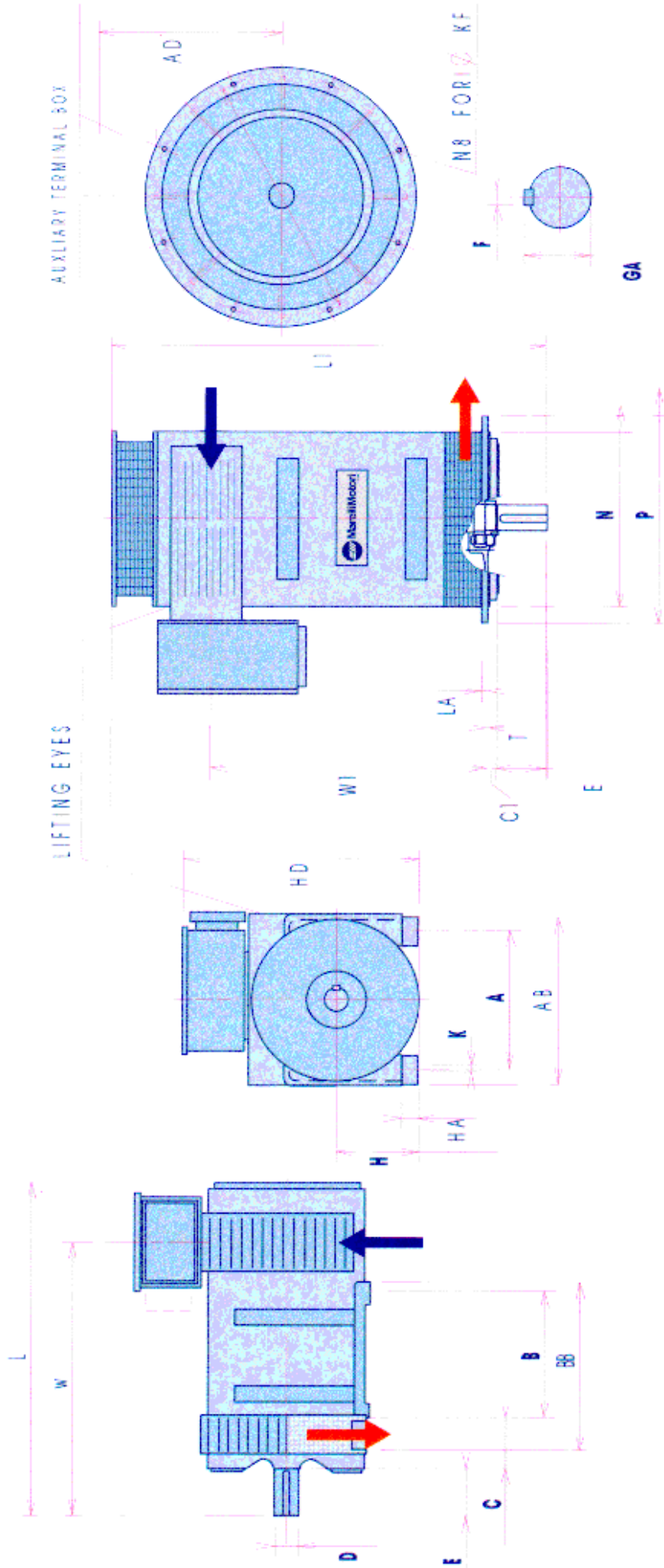
TYPE	SERVICE	SPEED	EFFICIENCY	COS φ	CURRENT		TORQUE			WEIGHT - B3	SERVICE
					NOMINAL	STARTING	NOMINAL	STARTING	PULL - OUT		
	S1	rpm	%	p.u.	440 V In / A	Ia / In	M Nm	Ma / M	Mm / M	Kg	S ≥ 30 mm KW
C3M 315 MA4	240	1775	93,5	0,87	449	5,8	1290	2,4	2,4	640	290
C3M 315 MB4	300	1775	94	0,88	552	5,8	1612	2,5	2,4	720	360
C3M 315 MD 4	375	1775	94,5	0,88	686	6	2015	2,6	2,5	825	445
C3M 355 LX 4	450	1786	95	0,82	759	5,8	2404	1,7	2	1150	520
C3M 355 LW 4	540	1786	95,4	0,84	885	5,8	2884	1,8	2	1260	620
C3M 355 LY 4	670	1787	95,9	0,83	1106	6,3	3577	2,1	2,2	1450	770
C3M 355 LZ 4	720	1787	96	0,85	1159	6,3	3844	2	2,1	1530	840
C3M 400 LX 4	850	1788	96,3	0,85	1364	6,5	4535	1,6	2,2	2150	980
C3M 400 LW 4	960	1789	96,4	0,84	1557	6,8	5119	1,8	2,4	2300	1100
C3M 400 LY 4	1200	1788	96,2	0,85	1928	7	6403	1,1	2,4	2450	1380
C3M 500 LC 4	1400	1787	96,4	0,87	2193	6,7	7474	1	2,3	3300	1650
C3M 500 LF 4	1700	1788	96,8	0,88	2622	7	9070	1	2,5	4400	2050

POLES 6 - FREQUENCY 50 Hz - ENVIRONNEMENT 45 ° C

TYPE	SERVICE	SPEED	EFFICIENCY	COS φ	CURRENT		TORQUE			WEIGHT - B3	SERVICE
					NOMINAL	STARTING	NOMINAL	STARTING	PULL - OUT		
	S1	380 V	Ia / In	M	Ma / M	Mm / M	Kg	S 2 30 min			
	KW	rpm	%	p.u.	In / A	p.u.	Nm	p.u.	p.u.		KW
C3M 315 MA 6	132	980	93	0,85	254	5,8	1285	1,9	2	715	155
C3M 315 MB6	160	980	94	0,85	305	5,8	1558	2	2	880	185
C3M 315 MC 6	200	980	94	0,85	381	5,8	1947	2	2,1	895	230
C3M 355 LX 6	250	990	94,2	0,82	492	5,8	2409	1,8	2	1130	290
C3M 355 LW 6	315	990	94,7	0,82	617	5,8	3035	1,7	2	1280	360
C3M 355 LY 6	375	991	95,1	0,82	731	5,8	3610	1,9	2,1	1390	440
C3M 355 LZ 6	400	991	95,2	0,83	770	6	3851	2	2,1	1470	480
C3M 400 LX 6	500	992	95,6	0,84	947	5,8	4808	1,7	2,3	2150	600
C3M 400 LW 6	560	992	95,8	0,84	1059	5,8	5385	1,7	2,1	2300	670
C3M 400 LY 6	630	992	96	0,87	1147	5,5	6059	0,9	2,1	2450	760
C3M 500 LB 6	735	992	96	0,86	1354	5,5	7068	0,9	2,1	3250	885
C3M 500 LD 6	850	993	96,3	0,87	1543	5,6	8166	0,9	2,3	3600	1020
C3M 500 LF 6	1000	993	96,5	0,87	1812	5,6	9607	0,9	2,3	4400	1200
C3M 500 LH 6	1250	993	96,7	0,87	2260	5,8	12009	1	2,4	5000	1500

POLES 6 - FREQUENCY 60 Hz - ENVIRONNEMENT 45 ° C

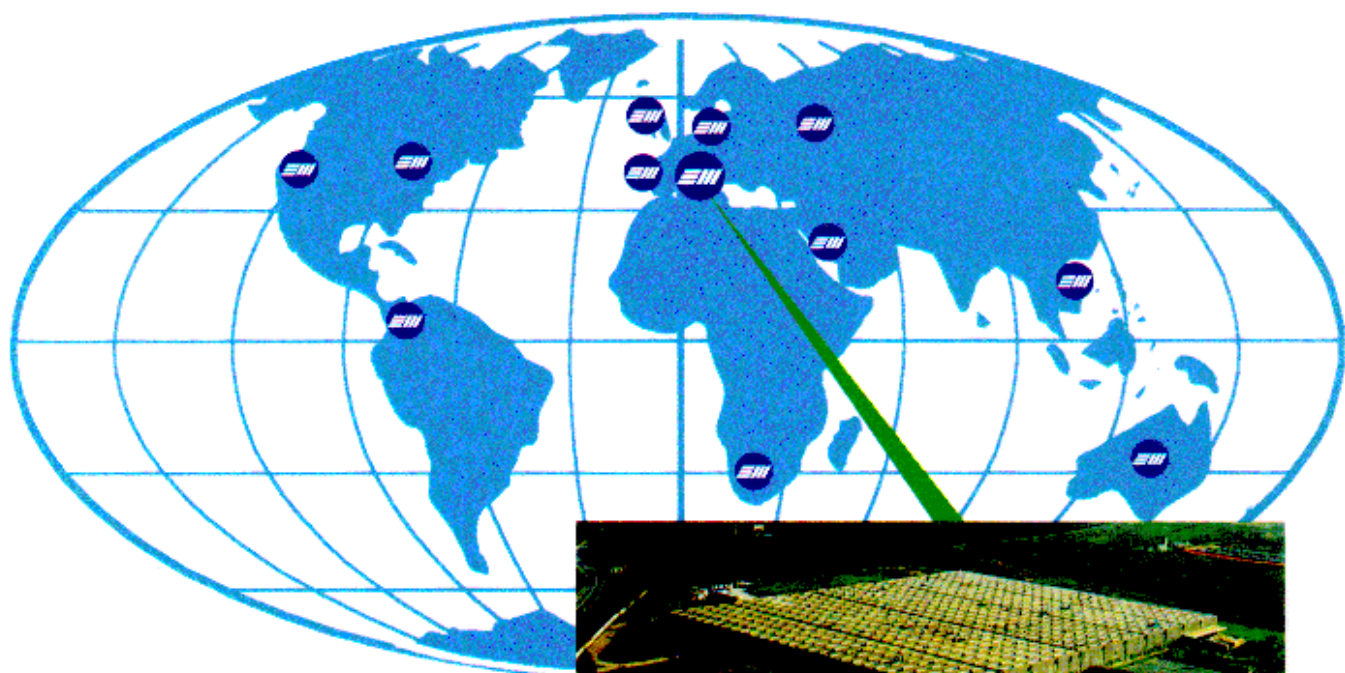
TYPE	SERVICE	SPEED	EFFICIENCY	COS φ	CURRENT		TORQUE			WEIGHT - B3	SERVICE
					NOMINAL	STARTING	NOMINAL	STARTING	PULL - OUT		
	S1	440 V	Ia / In	M	Ma / M	Mm / M	Kg	S 2 30 min			
	KW	rpm	%	p.u.	In / A	p.u.	Nm	p.u.	p.u.		KW
C3M 315 MA 6	160	1180	93	0,85	266	5,8	1294	1,9	2	715	185
C3M 315 MB6	190	1180	94	0,85	312	5,8	1536	2	2	880	220
C3M 315 MC 6	240	1180	94	0,85	395	5,8	1940	2	2,1	895	275
C3C 355 LX 6	300	1190	94,2	0,82	510	5,8	2405	1,8	2	1130	350
C3C 355 LW 6	380	1190	94,7	0,82	643	5,8	3046	1,7	2	1280	430
C3C 355 LY 6	450	1191	95,1	0,82	758	5,8	3605	1,9	2,1	1390	530
C3C 355 LZ 6	480	1191	95,2	0,83	798	6	3845	2	2,1	1470	580
C3C 400 LX 6	590	1192	95,6	0,84	965	5,8	4722	1,7	2,3	2150	720
C3C 400 LW 6	670	1192	95,8	0,84	1094	5,8	5362	1,7	2,1	2300	800
C3C 400 LY 6	750	1192	96	0,87	1180	5,5	6003	0,9	2,1	2450	900
C3C 500 LB 6	885	1192	96	0,86	1408	5,5	7083	0,9	2,1	3250	1050
C3C 500 LD 6	1000	1193	96,3	0,87	1568	5,6	7997	0,9	2,3	3600	1200
C3C 500 LF 6	1150	1193	96,5	0,87	1800	5,6	9196	0,9	2,3	4400	1380
C3C 500 LH 6	1450	1193	96,7	0,87	2264	5,8	11595	1	2,4	5000	1750



TYPE MOUNTING FLANGE SHAFT EXTENSION

IEC	A	AB	AD	B	BB	C	C1	H <sup>o-1</sup>	HA	HD	K	A	AB	W1	W	L1	L	L1	W	W1	KF	P	N <sup>h6</sup>	LA	M	T	D <sup>m6</sup>	E	GA	F	h <sup>9</sup>
315	508	600	550	457	550	216	/	315	20	865	27	1060	1115	843	673	22	800	680	25	740	6	90	170	95	25						
355	610	730	685	630	815	254	11	355	55	1040	30	1590	1590	1276	960	22	800	680	25	740	6	100	210	106	28						
400	686	820	750	710	1005	280	35	400	55	1120	35	1680	1837	1468	1220	26	1000	880	24	940	6	110	210	116	28						
500	900	1040	830	1400	1585	180	75	500	21	1402	33	2145	2330	1757	1610	28	1150	1000	25	1080	5	130	250	137	32						

All dimensions in mm



**MarelliMotori**

Marelli Motori S.p.A.  
Via Sabbionara, 1  
36071 Arzignano (VI) ITALY  
tel. +39.0444.479711 fax. +39.0444.479738  
<http://www.marellimotori.com>  
e-mail: [intl@marellimotori.com](mailto:intl@marellimotori.com)

**A QUALIFIED AND WIDESPREAD NETWORK**

**GREAT BRITAIN**

AMCO MARELLI  
Pantheon House  
The arena Roman Bank  
Bourne, Lincs, PE10 9LA England  
tel. +44.1778.426206  
fax. +44.1778.422328

**SPAIN**

Dirimotor  
Espronceda 63-65  
E - 08005 Barcellona - Spain  
tel. +34.3.3082508  
fax. +34.3.3088885

**VENEZUELA**

Giem de Venezuela C.A.  
Avda Fzas Armadas con Esq. Avda  
Urdaneta - Edif. Sudameris  
4° Piso - Of. 410  
tel. +58.2.5624830  
fax. +58.2.5612884

**ASIA PACIFIC**

Marelli Motori Asia Pacific  
Regional Office, 52c - 11/05 South View  
One Ampang Avenue  
Jalan Ampang Utama 2/1  
68000 Ampang, Selangor - Malaysia  
tel. +60.3.453.1396  
fax. +60.3.453.1420

**FRANCE**

MARELLI MOTORI  
21 rue François Garcin  
69003 Lyon - France  
tel. +33.4.78602502  
fax. +33.4.78602737

**USA**

Brush Electrical Machines Inc.  
14614 Falling Creek Drive, Suite 124  
Houston, Texas 77068, USA  
tel. +1.713.580.1314  
fax. +1.713.580.5801

**SOUTH AFRICA**

Brush Electrical Machines  
PO Box 417, Roodpoort 1725,  
Transvaal, South Africa  
tel. +27.11.764.4673  
fax. +27.11.764.4687

FKI Asia Pacific Sdn Bhd  
Lot 7, Jalan Majistret U1/26,  
Hicom-Glenmarie Industrial Park  
40150 Shah Alam  
Selangor D.E. - Malaysia  
Tel. +60 3 705 3736  
Fax +60 3 703 9625

**GERMANY**

FKI Elektromaschinen & Antriebstechnik  
Heilswannenweg 50  
31008 Elze - Deutschland  
tel. +49.5068.462402  
fax. +49.5068.462409

**MIDDLE EAST**

FKI Rotating Machines International  
C/o Modern Centre for Business Services  
P.O. Box 60, Mina Al Fahal  
Postal Code 116 - Sultanate of Oman  
Tel. +968 692283  
Fax +968 697284

